

Social Investment Fund

“Our mission is to mobilize resources from both internal and external sources as well as consultancy services to facilitate access of the poor to basic economic and social infrastructure, financial services and capacity building for sustainable poverty reduction based on the principles of green economy, accountability, transparency, inclusiveness and gender sensitivity.”



Table Of Content

About Social Investment Fund Who We Are	01	04	Our Goals and Target Our Functions and Key Past Performance
Our Services Areas of Competence	02	05	SIF CURRENT PROJECTS TRAJECTORY <ul style="list-style-type: none">• Integrated Rural Development Project Phase Two (IRDP II)• Post COVID-19 Skills Development and Productivity Enhancement Project (PSDPEP)
The Mandate of Social Investment Fund Our Mission, Vision, Core Values & Organogram	03	06	Contact Details Contact Number Website



About Social Investment Fund

The Social Investment Fund (SIF) was set up in 1998 under the Companies Code 1963 (ACT 179) by the Government of the Republic of Ghana, African Development Bank (AfDB) and the United Nations Development Programme (UNDP) as a rapid, reliable, and flexible mechanism for channeling resources to deliver targeted assistance to both Ghana's urban and rural impoverished communities. SIF is governed by Board of Directors. It employs effective institutional collaboration and cooperation coupled with the right targeting of beneficiaries and gender mainstreaming to create opportunities for the poor and vulnerable. SIF also collaborates with Private and Government institutions to provide Consultancy services.

As a pro-poor institution, our goal is to contribute effectively to reducing rural and urban poverty in Ghana. Since its incorporation as a company limited by guarantee, SIF has attained the confidence of multilateral institutions, private business entities and the Government of Ghana (GoG). It has implemented projects funded by the:

1. African Development Bank (AfDB).
2. OPEC Fund for International Development (OFID).
3. United Nations Development Programme (UNDP).
4. Government of Ghana.
5. Arab Bank for Economic Development in Africa (BADEA)
6. Private Business Entities.

Between 1998 and 2019, the SIF successfully completed the implementation of five (5) projects, namely, Ghana Poverty Reduction Project I (GPRP 1); Ghana Poverty Reduction Project II (also known as poverty II or OFID II); HIPC Poverty Reduction Project (HIPC); Urban Poverty Reduction Project (UPRP); and Integrated Rural Development Project.

Currently, SIF is implementing Integrated Rural Development Project Phase Two (IRDP II) with funding support from the OPEC Fund for International Development (OFID).

SIF operates in all the 16 regions of Ghana. Our operation areas are categorized into zones as follows:

Zone 1: Upper East, Upper West, Northern, North East and Savannah Regions.

Zone 2: Ashanti, Ahafo, Bono East and Brong Ahafo Regions.

Zone 3: Central, Western and Western North Regions.

Zone 4: Eastern, Volta, Oti and Greater Accra Regions.



Our Services

As a pro-poor institution, we are the premier Project Fund Management & Implementation Unit of choice, contributing effectively to reducing rural and urban poverty in Ghana.

Areas of Competencies of SIF

The areas of competencies of SIF are not limited to the following:

1. Project Management, Project Development for MMDA's, Development Partners and Development Finance Institutions
2. Project Design, Implementation, Monitoring and Evaluation
3. Fund Management, Facilitation of Financial Services, Grant Mobilisation & Management to the underserved
4. Research & Development, Innovation Consultancy
5. Micro, Small and Medium Enterprises (MSMEs) Development and Management
6. Capacity Building, Project Evaluation & Trainings

The Mandate of SIF

The SIF is mandated to contribute significantly to reducing rural and urban poverty in Ghana through the provision of targeted assistance to poor/deprived communities in Ghana in partnership with Community Based Organizations (CBOs), Local Government Authorities, Civil Society and Development Partners using a gender-sensitive, flexible, participatory, demand driven and sustainable process including the provision of social and economic infrastructure and services in its project design.

“ Government’s Preferred Project Fund Management & Implementation Unit of Choice for MMDAs, DP and DFIs, Private Sector & Not for Profit Institutions.”

Our Mission

Our mission is to mobilize resources from both internal and external sources as well as consultancy services to facilitate access of the poor to basic economic and social infrastructure, financial services and capacity building for sustainable poverty reduction based on the principles of green economy, accountability, transparency, inclusiveness and gender sensitivity.

Our Vision

The vision of SIF is to be a lead organization in Ghana and the sub-region for resource transfer to empower communities for sustainable development.



Resource Mobilisation from Internal and External Sources for Sustainable Poverty Reduction

Facilitate Access to Basic Economic and Social Infrastructure

Facilitate Access to Financial Services and Capacity Building based on the principles of green economy, accountability, transparency, inclusiveness and gender sensitivity.

01 Professionalism

-Judicious use of resources; Due Diligence; Respect for time; Reliable; Loyal; Honest; Responsible; Resourceful; Innovative and creative; Strive for excellence and high-quality standard; Occupational health and safety; Personal development; and Self-motivation.



02 Transparency and Accountability

Openness, Truthfulness and Communication.



03 Teamwork

Mutually supportive; Working co-operatively to achieve common goal; Respecting each other's views; Appreciative of each other's efforts; Sharing of information and resources; and Good inter-personal relationship.



04 Participatory Development

Public Consultation, Participatory decision making, community ownership and sustainability.



Our Core Values



Gender Sensitivity and Inclusiveness. 05

Non-Discrimination on basis of gender, age, religion, creed, race, disability and political ideology.



Adherence to the Principles of Green Economy 06

The belief in the Sustainable, Justice, Dignity, Healthy Planet, Inclusion, Good Governance and Accountability, Resilience, Efficiency and Sufficiency, and Generations Principles of the Green Economy.



Partnership and Collaboration 07

Working in partnership with various stakeholders and development agencies for sustainable community-based development.



Our Functions



The overall function of SIF is to contribute significantly to government efforts to achieve the United Nations' Sustainable Development Goals (SDGs) by 2030.



- Provide multi-faceted consultancy services & Improve Human Resource Capacity and Institutional Efficiency and Effectiveness



- Support activities that significantly contribute to Green Economy.



- Facilitate access by the poor to basic economic and social infrastructure and financial services



- Strengthen the capacity of local level institutions to enhance: participatory development planning and management; good governance; and MSME development.

Our Staff's Commitment to Results

The Social Investment Fund (SIF) has a total mainstream staff of twenty-eight (28), and two(2) political appointees. The staff is divided into three categories: management, senior staff, and junior staff.

The management category consists of the mainstream staff and the political appointees. The mainstream staff are the Executive Director, Finance and Accounting Specialist, Procurement Specialist, Monitoring and Evaluation Specialist, and Administrative Officer. The political appointees are the Deputy Executive Director and the Technical Advisor. These staff members are responsible for the overall management of the SIF.

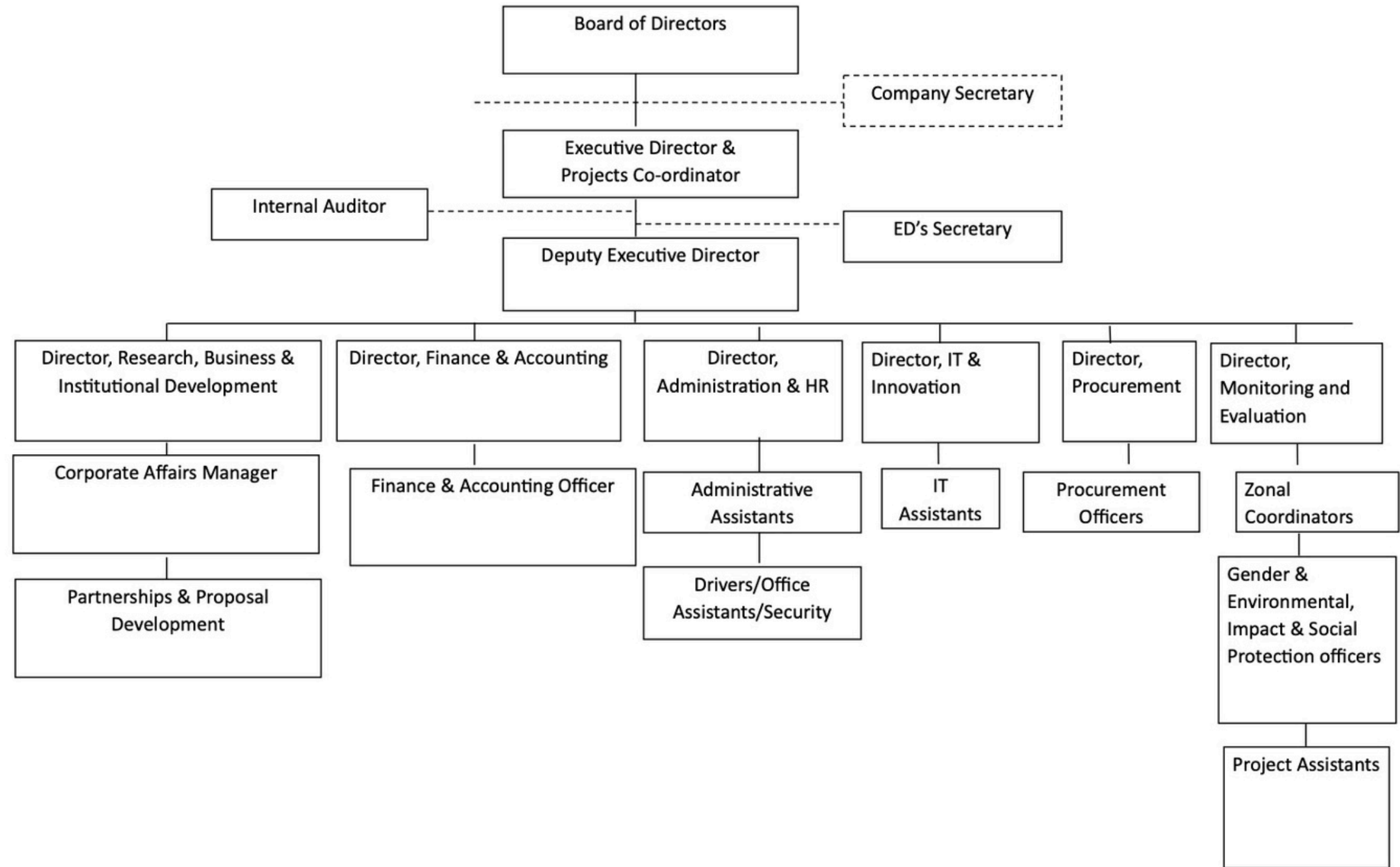
The senior staff category consists of the Project Officer, Zonal Coordinators, Internal Auditor, Account Officer, Administrative Assistant, Information Technology Officer, and Executive Director's Secretary. These staff members are responsible for the day-to-day operations of the SIF.

The junior staff category consists of the Office Assistant, Project Assistant, Office Cleaner/Dispatch Rider, Project Driver, Executive Director's Driver, Deputy Executive Director's Driver, and Security Guards. These staff members provide support to the management and senior staff.

The SIF has a diverse workforce with a wide range of educational and professional backgrounds. The SIF is committed to providing a workplace that is welcoming and supportive of all staff members.

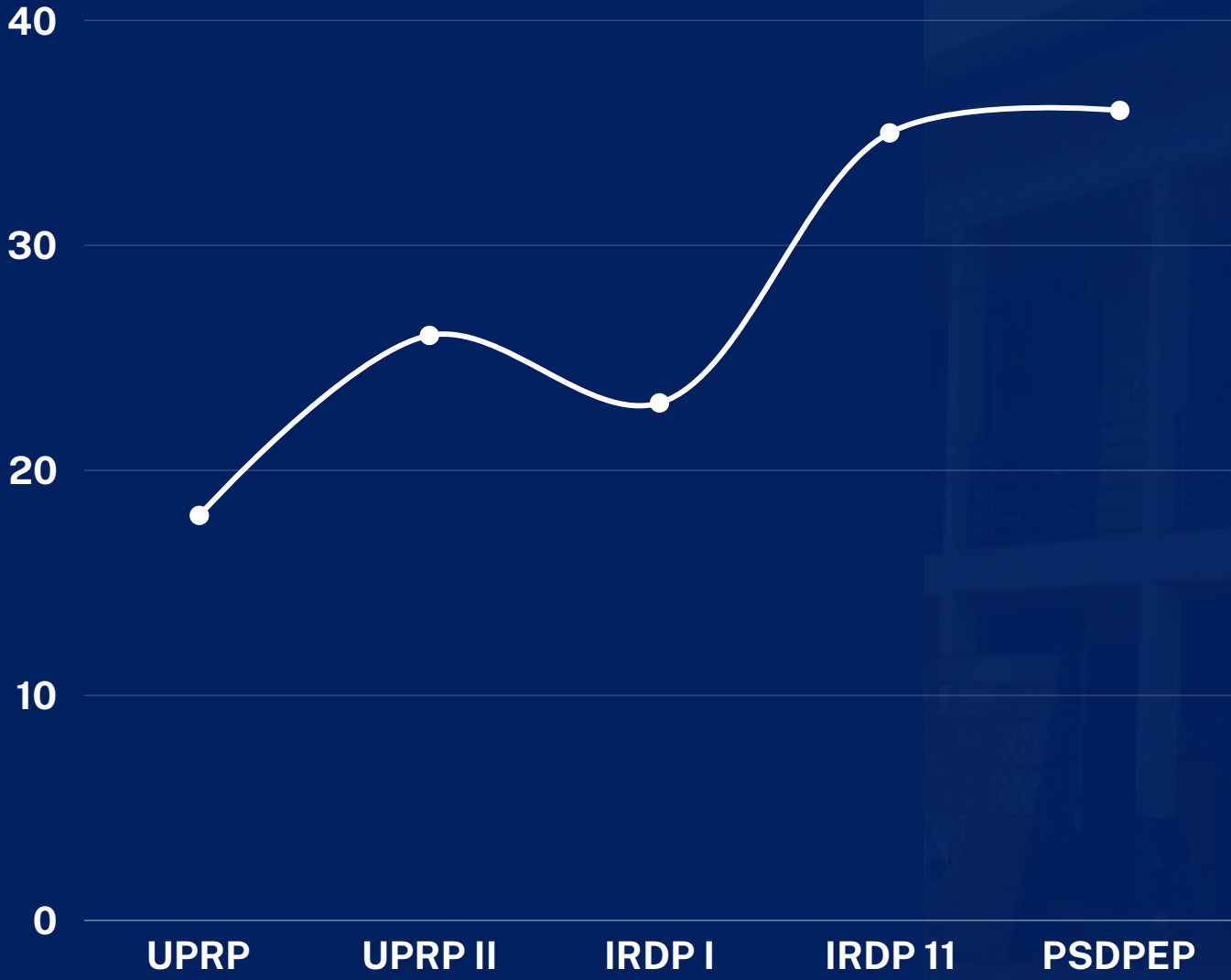


Organogram



SIF PROGRAMMES/PROJECTS/INITIATIVES IMPLEMENTED

Our goal has been to leverage our institutional structure, unique project delivery approach, financing to attract complementary financing. This will further entrench our position as Government's premier project implementation unit and to deliver unparalleled impact through our projects and programs.



SIF PROJECTS IMPLEMENTED SINCE 1998



Summary of Past Projects

Since its establishment in 1998, the Social Investment Fund (SIF) has successfully completed the implementation of the following projects.

1. Ghana Poverty Reduction Project One (GPRP I);
2. Ghana Poverty Reduction Project Two (Also known as Poverty II or OFID) ;
3. Urban Poverty Reduction Project (UPRP); and
4. Integrated Rural Development Project One (IRDP I)

Ghana Poverty Reduction Project One (GPRP I);

:
GHANA POVERTY REDUCTION PROJECT (GPRP 1)

Funding Sources:

AfDB (14.9 Million USD)
OFID (2.3 Million USD)
UNDP (1.7 Million USD)

Project Amount= US\$18.9 Million

Period: 1998-2005

Components:

1. Community Outreach and Participatory Monitoring
2. The Social Investment Fund(Basic socio-economic infrastructure; Microfinance; Capacity building)
3. Management and Coordination



Ghana Poverty Reduction Project One (GPRP 2);

:
GHANA POVERTY REDUCTION PROJECT TWO (GPRP 2)

Funding Agency: OPEC Fund for International Development (OFID)

Project Amount: US\$ 7.0 Million

Period: 2005-2009

Components:

1. Community Outreach and Participatory Monitoring
2. The Social Investment Fund(Basic socio-economic infrastructure; Microfinance; Capacity building)
3. Management and Coordination



Key Achievements

Ghana Poverty Reduction Project One

(GPRP 1&2)

Beneficiary Districts: GPRP 1&2: 108 Districts

KEY ACHIEVEMENTS:GPRP 1&2

Provided 1,563 socio-economic infrastructure (classroom blocks, teachers' quarters, early childhood development centers, rural clinics, nurses' quarters, water and sanitation facilities) which benefitted about 1,600,000 people.

Jobs were created for over 400 small-scale contractors who employed about 5,000 artisans and 10,000 unskilled labour.

About 5,200 representatives of CBOs, NGOs were empowered through the provision of skills in problem analysis and project identification, project management, community governance, public-private partnership, and the use of Community Score Cards in Project Monitoring.

32 Microfinance Institutions (MFIs) received funds to the tune of GH¢4.4 million from the SIF Loan Fund for disbursement to their clients.

1.6,500 clients of MFIs(55% women) benefitted from the micro credit facility.

URBAN POVERTY REDUCTION PROJECT (UPRP)

Funding Agency: African Development Bank (AfDB)

Project Amount: US\$ 37.5 Million

Period: 2007-2012

Beneficiary Districts: 14 Districts

Components:

1. Capacity Building for Pro-poor Urban Development and Management;
2. Social Capital and Investment Support;
3. Urban Small-Scale Enterprise Development; and
4. Project Management and Coordination.

Key Achievements

URBAN POVERTY REDUCTION PROJECT(UPRP)

The capacity of 360 representatives of MMDAS, CBOs and CSOs in Public-Private-Partnership (PPP) strengthened resulting in the documentation of a PPP design and implementation plan.

3,356 households (HH) and 10,096 persons were identified and provided with direct support of GHC 730, 730.

USD 30,000 was provided as support for the finalization of the Ghana's Social Policy.

236 Social infrastructure were implemented. 78% were fully completed.

Attendance rate of beneficial pupils increased from 93% to 100% as truancy level was reduced.

GHC1,782,936.00 was disbursed to 14 PFIs for disbursement to 205 SSEs (55% being females).

49 participants(1 female and 48 male) from the PFIs were trained in new savings products for SSEs

Key Achievements

URBAN POVERTY REDUCTION PROJECT(UPRP)

The capacity of 360 representatives of MMDAS, CBOs and CSOs in Public-Private-Partnership (PPP) strengthened resulting in the documentation of a PPP design and implementation plan.

3,356 households (HH) and 10,096 persons were identified and provided with direct support of GHC 730, 730.

USD 30,000 was provided as support for the finalization of the Ghana's Social Policy. 236 Social infrastructure were implemented. 78% were fully completed.

Attendance rate of beneficial pupils increased from 93% to 100% as truancy level was reduced.

GH¢1,782,936.00 was disbursed to 14 PFIs for disbursement to 205 SSEs (55% being females).

49 participants(1 female and 48 male) from the PFIs were trained in new savings products for SSEs

PHOTO GALLERY -SIF GPRP/UPRP





Borehole for the Lipelime community in the Upper West Region



Nurses' Quarters for the Hlefi Community at Ho Municipality in the Volta Region



M&E ICT Training for Beneficiary Districts



Integrated Rural Development Project Phase Two (IRD P)

Funding Agencies:

Arab Bank for Economic Development in Africa (BADEA)- US\$8.6 Million

OPEC Fund for International Development (OFID) -US\$10.5 Million

Government of Ghana(GoG) - US\$3.28 Million

Project Amount: US\$ 22.38 Million

Period: 2013-2019

Beneficiary Districts: 21 Districts

Components:

- 1.Sensitization and Outreach, Monitoring and Evaluation
- 2.Provision of Basic Social Infrastructure
- 3.Provision of Micro Credit
- 4.Training and Technical Support
- 5.Project Management and Coordination



Key Achievements

INTEGRATED RURAL DEVELOPMENT PROJECT (IRDP)

Sensitized 12,183 (43.3% women) people in 132 project beneficiary communities.

Strengthened capacity of 4,219(1,525 females and 2,694 males) farmers in safe use and handling of agrochemicals, agricultural value chain financing, post-harvest management, agribusiness, farm management, good agricultural practices, and other agronomic practices.

Constructed 245 socio-economic infrastructure in 132 communities in the then 10 regions of Ghana.

The socio-economic infrastructure comprised 25No. 6-Unit Classroom Blks; 24 Teachers' Qtrs; 22 Clinics; 22 Maternity Centres; 22 Nurses' Qtrs; 111 mechanized Boreholes; 16 Culverts and Drains; and 3 Mkts.

Disbursed US\$2,059,931 to 3,046 farmers.

PHOTO GALLERY

KEY INTERVENTIONS - IRDP



6-UNIT CLASSROOM BLOCK WITH 8-SEATER LATERINE AT EGYIRIFA



6-UNIT CLASSROOM BLOCK WITH 8-SEATER LATERINE AT EGYRIFA



TEACHERS QUARTERS WITH MECHANISED BOREHOLE @ NYINAWUSU



RURAL CLINIC WITH BOREHOLE AT NKWANTANAKESE

Integrated Rural Development Project Phase Two (IRDP II)

The SIF is implementing the Integrated Rural Development Project Phase Two (IRDP II). The OPEC Fund for International Development (OFID) and the Arab Bank for Economic Development in Africa (BADEA) jointly financed the Integrated Rural Development Project Phase One from 2013 to 2019. The project served 132 communities in 21 districts across the then 10 regions of Ghana benefiting about 2.3 million people. The Integrated Rural Development Project Phase One improved access of the rural poor to basic socio-economic infrastructure; increased agricultural productivity; and households' incomes.

After successful completion of the Integrated Rural Development Project Phase One, Government of Ghana and OFID agreed to extend the benefits enjoyed by targeted beneficiaries to districts that were not included, hence the Phase Two. In September 2022, Government of Ghana (GoG) signed a 5-year (2022-2027) agreement with the OFID to implement Phase Two of the Integrated Rural Development Project (IRDP II). The IRDP II became effective in November 2022. It is being implemented in twenty-three (23) districts in the sixteen (16) regions of Ghana. The goal of IRDP II is to facilitate job creation, enhance access to socio-economic infrastructure, and improve livelihoods for sustainable poverty reduction. The project will also increase resilience of rural communities to the impact of climate change and enhance provision of credit to small and medium scale enterprises (SMEs).

The IRDP II is being funded from a loan facility of US\$ 20 million from OFID. The Project has four (4) components and embraces four (4) categories of expenditure namely, goods, works, services, and operating cost.

The components are as follows:

Provision of Socio-Economic Infrastructure

Provision of Credit to SMEs

Outreach, Sensitization and Capacity Building

Management and Coordination.

The Ministry of Local Government, Decentralisation and Rural Development and the Social Investment Fund on Wednesday the 23rd of August 2023, launched the IRDP II at the Institute of Local Government Studies (ILGS) at Ogbojo, Madina in Accra. The one-day event saw the gathering of key stakeholders involved in the execution of Ghana's Poverty Reduction Agenda such as representatives of the Project Executing Agency, the Project Implementing Unit (PIU) and the beneficiary Metropolitan, Municipal and District Assemblies (MMDAs).

Key Summary - Integrated Rural Development Project Phase Two (IRDP II)

INTEGRATED RURAL DEVELOPMENT PROJECT PHASE TWO (IRDP2)

Funding Agency: OPEC Fund for International Development(OFID)

Project Amount: US\$20.00 Million

Period :2022-2027 Beneficiary Districts: 23 Districts

Components : 4 Components

- 1.Provision of Socio-Economic Infrastructure
- 2.Provision of credit to SMEs Outreach,
- 3.Sensitization and Capacity Building
- 4.Management and Coordination

Expected outcomes - Integrated Rural Development Project Phase Two (IRDP II)

Component I

Component One (1) of IRDP II involves the construction and equipping of 206 Basic Socio-economic Infrastructure units across the 23 beneficiary districts.

The socio-economic infrastructure is intended to increase access of the people to:

- Improved quality Health Service delivery;
- Improved quality Classroom Infrastructure;
- Improved quality Potable Drinking Water; and
- Increased Income Levels, amongst others.

The 206 Basic Socio-economic infrastructure comprises 51No. Mechanized Boreholes; 43No. Sanitation Facilities; 42No. Six-unit Classroom Blocks; 20No. Teachers' Quarters; 19No. Culverts/Drains; 15No. Rural Clinics; 15No. Nurses Quarters; and 1No. Market (7 sheds, 1 revenue booth, 1 warehouse and 1 store).

The Project will procure furniture to furnish the Primary Schools, and the Rural Clinics. Four local multi-disciplinary Technical Consultancy firms will be engaged to conduct Design review and supervise Civil works. The consultancy firms will also provide the following services:

- monitoring and liaising with contractors;
- ensuring adherence to design specifications and relevant standards;
- preparing monthly progress report; and
- ensuring adequate implementation.

The project will explore the possibility of installing water closets (WCs) rather than KVIPs in beneficiary districts with access to regular electricity and constant water supply. The project will also explore the possibility of installing plants and hedges as natural fences across the 42No. six-unit classroom blocks to be constructed.

Expected outcomes - Integrated Rural Development Project Phase Two (IRDP II)

Component II

Component Two (2) of the IRDP II will support the provision of USD3 Million credit facility to SMEs involved in food crops marketing, agro-processing and other activities along the agriculture value chain, negatively impacted by the COVID-19 pandemic.

The project will target qualified business activities, sectors and sub sectors in the following areas:

- Cultivation of food crops (production and processing of local rice, maize, sorghum, millet, guinea corn, etc).
- Marketing of food crops and agricultural produce
- Agro-processing
- Animal husbandry (poultry, piggery, cattle rearing, sheep and goat rearing, etc.)
- Agricultural inputs (fertilizer, planting materials, agro-chemicals, agricultural processing plants, machines, etc.)
- Horticultural activities (pineapple production, vegetable farming, etc.)
- Aquacultural activities (fishing, fish mongering, etc.)
- Manufacturing activities (carpentry, welding, metal fabrication, shoe making, etc.)
- General trading activities (buying and selling of local products)
- Working capital funds
- Handicraft production (art and cultural items)
- Catering services

A maximum amount of US\$30,000 credit facility could be available to any beneficiary.

Anticipated Completion Date

The Integrated Rural Development Project Phase Two is expected to end in October 2027.

Status of Implementation

IRDP II

The status of implementation of Integrated Rural Development Project as of September 2024 is as follows:

- The project has been launched at the national level. It was launched in August 2023 at the institute of Local Government Studies in Accra.
- District sensitization and orientation workshops have been conducted in all the 23 beneficiary districts to provide information on the concept of the project, the components and how to access support.
- About 5,186 persons in 106 communities have been sensitized on the SIF, IRDP 2, the various components and how to assess support during the period.
- District baseline survey has been conducted in all the 23 project beneficiary districts to establish baseline information or benchmarks for the various interventions under the project.
- Four (4) local multi-disciplinary technical consultancy firms have been engaged to supervise civil works in the 4 SIF operating zones under the project.
- 106 communities have been selected to benefit from 206 socio-economic infrastructure under the project.
- 23 contractors have been engaged to implement the construction of 206 No. socio-economic infrastructure in 106 selected communities under the project.
- Project sites in the 106 beneficiary communities have been handed over to the 23 selected contractors for implementation of civils works, which is currently ongoing at the various sites.
- The SIF has received delivery of 5 No. 4x4WD Double Cabin Pick-Up for the project monitoring and supervision activities.
- The Social Investment Fund has upgraded its management information system with procurement of 1No. central server, lap-top computers, printers and accessories. Also, an accounting software was procured and installed at the PIU during the quarter.

KEY ACHIEVEMENTS

IRDP II

INTEGRATED RURAL DEVELOPMENT PROJECT PHASE TWO (IRDP2)

KEY ACHIEVEMENTS

- 4 local multi-disciplinary technical consultancy firms have been engaged for design review and supervision of construction of socio-economic infrastructure in the 4 SIF operating zones.
- 23 contractors have been engaged for the construction of 206 socio-economic infrastructure in 106 beneficiary communities.
- Overall level of completion is 31.27% as at December, 2024.
- 398 representatives (315 males and 83 females) of the 23 beneficiary districts have been sensitized.
- District baseline survey has been conducted across the 23 beneficiary districts to establish benchmarks for measuring project impacts.
-
- 5 Pick-up vehicles have been procured for project monitoring and supervision activities.



PHOTO GALLERY

KEY INTERVENTIONS - IRDP II





Construction of Nurses' Quarters with a Mechanized Borehole at Binkoli in Karaga District



Construction of a Market at Beposo in Sekyere Central District



Construction of 6-Unit Classroom Block with WC Toilet, at Adamorobe Anglican Basic School/JHS in Akuapem South Municipal

POST COVID-19 SKILLS DEVELOPMENT AND PRODUCTIVITY ENHANCEMENT PROJECT (PSDPEP)

**MINISTRY OF FINANCE/SOCIAL INVESTMENT FUND (MOF/SIF)
AFRICAN DEVELOPMENT BANK (AfDB)**

**POST COVID-19 SKILLS DEVELOPMENT & PRODUCTIVITY
ENHANCEMENT PROJECT (PSDPEP)**

Key Summary - PSDPEP

Funding Agency: African Development Bank (AfDB)

Project Amount: US\$28.5 Million Grant

Period: 2022-2027

Implementing Partners: GNA, UG & MASLOC, SIF

Lead Partner/PIU: The Social Investment Fund(SIF)



Project Background

Post COVID-19 Skills Development and Productivity Enhancement Project (PSDPEP) is an intervention aimed at contributing to Ghana’s sustainable post-COVID-19 recovery in the health sector and supporting the restoration of livelihoods, income and employment opportunities and private sector development. PSDPEP is being funded from a grant facility of \$US 28.5 million from the African Development Bank (AfDB). The project aims to contribute to Ghana’s sustainable post-COVID-19 recovery in the health sector and support the restoration of livelihoods, income and employment opportunities and private sector development.

Project Specific Objectives

1. The project specific objectives are:
2. (i) to improve and climate-proof infrastructure and health-related skills development in
3. higher education (University of Ghana - Legon) and
4. (ii) to promote climate-smart entrepreneurship and job creation among youths, women, MSMEs and cooperatives.

Project Components

The project has 3 components namely:

- Skills Development in Higher Education for Strengthening the Health Sector
- Rebuilding Youth and Women’s Livelihoods Through Entrepreneurship and Employment Creation
- Project Management

Beneficiaries of the Project are staff and clients of the project implementing institutions; youth and women operating MSMEs and/or in cooperatives; and the population of Ghana in general. PSDPEP is being implemented by the Social Investment Fund (SIF); Ghana News Agency (GNA); Microfinance and Loans Centre (MASLOC); and the University of Ghana (Department of Medical Microbiology, Biotechnology Centre, School of Nursing and Midwifery). The Project Implementation Unit (PIU) has been established within the Social Investment Fund to undertake the day-to-day activities of the project.

Project Cost and Financing

The total cost is estimated to be UA 22.15 million (USD 29.90 million) excluding taxes and customs duties of which UA 20.14 million will be from ADF-15 and UA 2.01 million will be an in-kind contribution from the Government of Ghana.

Expected outcomes - PSDPEP

Component one (1) of the project will support the:

1. Construction of three (3) climate-proofed and gender responsive health-related skills and research facilities (for microbiological research and skills development, biotechnological research and skills development, and nursing and midwifery research and skills development), at the University of Ghana, Legon.
2. Sustainable procurement of equipment and furniture for the three (3) skills development and research facilities.
3. Conducting biomedical and biotechnological discovery research to enhance Ghana's human capacities to handle current diseases and future pandemics' clinical laboratory testing, discovery of drugs, and prevention measures.
4. Training about two hundred and fifteen (215) faculty and research staff of the three (3) facilities through scholarships provided by the Project to increase teaching staff to train additional health care personnel and high-end researchers especially to the doctoral degree levels.
5. Strengthening the health and Medium Small and Micro Enterprises (MSMEs) communication capacity of the Ghana News Agency (GNA) by digitalizing its systems, rehabilitating its buildings at five (5) stations, training its one hundred and forty-four (144) staff or journalists in health and MSMEs communication.

Component two (2)

Will support the rebuilding of livelihoods and sources of income among youths and women for them to recover from the socio-economic shocks or impacts of the COVID-19 pandemic on individuals, households, and enterprises, especially those operating (MSMEs) that were directly affected by the COVID-19 pandemic. It will support:

1. Construction of up to four (4) climate-resilient technical skills development institutions.
2. Provision of technical and climate-smart skills training for women, youths and other vulnerable groups in priority training areas (including agro-industrial, construction-skills such as tiling, welding, plumbing and plaster of Paris (PoP), tourism, creative arts and hospitality catering; and ICT/digital skills).
3. Provision of entrepreneurial (including financial literacy) and climate-smart skills training among youths and women and other vulnerable groups to enhance their productivity and employability.
4. Provision of low carbon emission equipment for the technical skills training centres.
5. Establishment of a United States Four Million (US\$ 4 million) credit facility to support MSMEs of women and youth to recover from COVID-19 impacts, creation of at least four thousand eight hundred (4,800) jobs and form a basis for the establishment of Ghana's Youth Entrepreneurship Investment Bank (GYEIB).
6. Digitalization of the Microfinance and Small Loans Centre (MASLOC) loan management system to enhance its efficiency and coverage and to create about twenty thousand (20,000) indirect jobs.

Expected outcomes - PSDPEP

Component three (3) will provide technical and administrative support for the implementation of project activities under the two (2) components above, including:

1. Preparation and utilisation of Project implementation manuals, financial management and procurement training for Project implementing institutions, monitoring Project implementation progress.
2. Facilitating procurement and financial management activities (including disbursement, financial control and reporting, and audits).
3. Technical training.
4. Producing periodic (quarterly and annual) Project progress reports.

Anticipated Completion Date

The Post COVID-19 Skills Development and Productivity Enhancement Project (PSDPEP) is expected to complete in March 2028.



Status of Implementation -PSDPEP

Component 1: Skills Development in Higher Education for Strengthening the Health Sector:

- The project has awarded scholarships to 16 MPhil and PhD students to undertake research in microbiology. The beneficiaries of the scholarship program consist of 7 females and 9 males. Eight of the awardees are pursuing MPhil program whilst the other eight are pursuing PhD programs.
- Biotechnology Centre has developed Curricula for Masters and PhD programs in Biotechnology. The curricula have been approved by all relevant committees and boards of University of Ghana. Inspection and evaluation of the curricula have been conducted by Ghana Tertiary Education Commission (GTEC), pending final approval.
- A technical consultancy firm has been engaged to undertake consultancy services for design review and supervision of health research and training facilities for department of medical microbiology, Biotechnology Centre, and the School of Nursing and Midwifery.
- A consultancy firm has been engaged to conduct advocacy training on health & MSMEs for 150 staff of Ghana News Agency (GNA). The training is ongoing and expected to complete by October 2024.
- Technical evaluation report on consultancy services for recruitment of a firm for training of staff at GNA has been prepared and submitted to the Bank for review and no objection.
- Bids have been received for rehabilitation of four offices of GNA. Evaluation of bids is ongoing.

Component 2: Rebuilding Youth and Women's Livelihoods Through Entrepreneurship and Employment Creation:

- Combined evaluation report, pre-contract negotiation minutes and draft contract for the engagement of technical consultancy firms to design and supervise the construction of civil works at 4 Technical and Vocational Training centers have been submitted to the Bank for review and no objection.
- Out of the US\$1million received under the micro credit component of the PSDPEP project, US\$983,747(11,657,400 Cedis) has been disbursed to 1521 youth and women MSMEs.

Justification for the disbursement of the credit facility has been prepared and approved by the Bank.



Status of Implementation -PSDPEP

Preparation for request for the second tranche of the credit facility has commenced. The credit facility is meant to facilitate rebuilding of the livelihoods of youth and women MSMEs which were adversely impacted as a result of COVID-19 pandemic in 2020.

- The implementation of MASLCO activities under the project has resumed after the resolution of the procurement issues by the Bank. Procurement processes for consultancy services for digitalization of MASLOC loan management system is ongoing.
- An accounting software was procured and installed at the PIU. Relevant staff of the PIU has been trained on the use of the software which is expected to go live by the end of October, 2024.

Component 3: Project Management:

- The Social Investment Fund (SIF) has recruited an Environmental, Climate and Social Safeguards expert as well as a Gender Expert to strengthen PIU's capacity in these areas.
- Office equipment for SIF has been supplied, delivered and installed.
- Nine vehicles have been supplied and delivered for the SIF, Department of Microbiology, Biotechnology Centre and the Ghana News Agency's (GNA) for project supervision and monitoring activities.



Key Achievements -PSDPEP

POST COVID-19 SKILLS DEVT & PRODUCTIVITY ENHANCEMENT PROJECT CONT...

- 16 out of the project target of 20 MPhil and PhD students have been awarded scholarship to conduct discovery research in Microbiology by the DoMM of University of Ghana Medical School.
- 3 female Biomedical Experts have been selected for local and international training.
- GTEC has granted an accreditation to the Biotechnology Centre of UG to run MPhil and PhD programs in Biotechnology.
- 14 students (7 PhDs and 7 Mphils) from public universities in Ghana have been selected for scholarship to study programs in Biotechnology.
- A Technical Consultant (Promacon Consult Ltd) has been engaged to design, review and supervise construction of Biotechnology Centre, Microbiology Centre and extension of Nursing School of the SoNM.
- 123 staff of the GNA (79 males, and 44 females) have been trained in MSMEs' access to credit and health related reporting.
- A Technical Consultant (Knak Design Partnership) has been engaged to undertake consultancy services for design and supervision of construction of 4 training centres under the SIF.
- US\$983,747 Million has been disbursed to 1,521 youth and women SMEs owners(553 males and 968 females).

PHOTO GALLERY

KEY INTERVENTIONS - PSDPEP

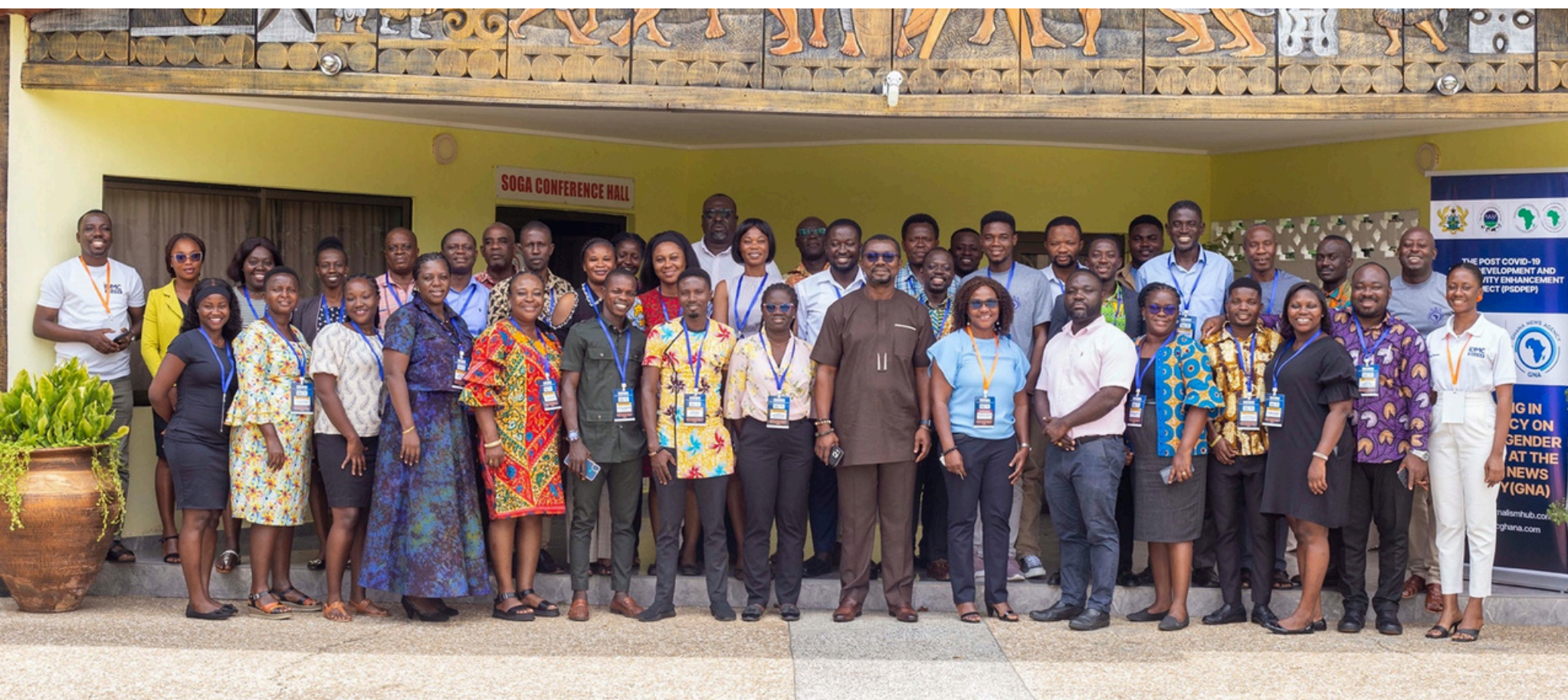




Training in advocacy on health and MSMEs at the GNA



Training in advocacy on health and MSMEs at the GNA



Training in advocacy on health and MSMEs at the GNA

Integrated Rural Development Project Phase Two (IRDP II)

- BADEA Component

The goal of the project is to enhance access to social and economic infrastructure and improve livelihoods for sustainable poverty reduction.

The specific objectives of the project are to:

- Enhance access to social and economic infrastructure.
- Enhance access of Micro Credit facility to Micro, Small and Medium scale Enterprises (MSMEs)
- Build capacity of project beneficiaries

The project will be implemented in 23 districts in the 16 regions of Ghana through demand-driven approach and based on the incidence of poverty in the districts. The following are the selected beneficiary districts for the project.

Total project cost is US\$15,300,000.00 of which US\$14,500,000.00 or 94.77% is expected from BADEA. A Government of Ghana counterpart and Beneficiaries contributions of 5.23% of the total loan, amount to US\$800,000.00.

Status of IRDP II, BADEA Component

The Project approval letter has been received from BADEA Board of Directors after successful appraisal of the project in February 2023.

- BADEA Component of IRDP II is yet to obtain Cabinet and Parliamentary Approvals.
- It will be funded from a loan facility of US\$14.5 Million from Arab Bank for Economic Development in Africa (BADEA).
- It will be implemented in 20 Municipal and District Assemblies (MDAs) across the 16 regions of Ghana.



Key Stakeholders

The key stakeholders of the Social Investment Fund are:

- Ministry of Finance (MoF)
- The Ministry of Local Government, Decentralization and Rural Development (MLGDRD)
- OPEC Fund for International Development (OFID)
- African Development Bank
- Arab Bank for Economic Development in Africa (BADEA)
- Metropolitan, Municipal and District Assemblies (MMDAs)
- ARB Apex Bank

PHOTO GALLERY

SOCIAL INVESTMENT FUND PROJECTS



THE SOCIAL INVESTMENT FUND (SIF)

IMPACTFUL SOCIO-ECONOMIC INFRASTRUCTURE OF SIF

EDUCATION



6-UNIT CLASSROOM BLOCK WITH 8-SEATER LATERINE AT EGYIRIFA

THE SOCIAL INVESTMENT FUND (SIF)

IMPACTFUL SOCIO-ECONOMIC INFRASTRUCTURE OF SIF

EDUCATION



TEACHERS QUARTERS WITH MECHANISED BOREHOLE @ NYINAWUSU

THE SOCIAL INVESTMENT FUND (SIF)

IMPACTFUL SOCIO-ECONOMIC INFRASTRUCTURE OF SIF

EDUCATION



6-UNIT CLASSROOM BLOCK WITH 8-SEATER KVIP AT TSITO

THE SOCIAL INVESTMENT FUND (SIF)

IMPACTFUL SOCIO-ECONOMIC INFRASTRUCTURE OF SIF

HEALTH



RURAL CLINIC WITH MECHANIZED BOREHOLE AT NKOTOMSO

THE SOCIAL INVESTMENT FUND (SIF)

IMPACTFUL SOCIO-ECONOMIC INFRASTRUCTURE OF SIF

HEALTH



NURSES' QUARTERS WITH MECHANIZED BOREHOLE AT ABUTIA KISSIFLUI - HO WEST

THE SOCIAL INVESTMENT FUND (SIF)

IMPACTFUL SOCIO-ECONOMIC INFRASTRUCTURE OF SIF

HEALTH



RURAL CLINIC WITH MECHANIZED BOREHOLE AT NKWANTAKESE - AFIGYA KWABRE

THE SOCIAL INVESTMENT FUND (SIF)

IMPACTFUL SOCIO-ECONOMIC INFRASTRUCTURE OF SIF
MARKET



YAMORANSA MARKET

THE SOCIAL INVESTMENT FUND (SIF)

IMPACTFUL SOCIO-ECONOMIC INFRASTRUCTURE OF SIF
MARKET



REVENUE BOOTH ATTACHED TO THE MARKET AT ASANKRAGUA

THE SOCIAL INVESTMENT FUND (SIF)

IMPACTFUL SOCIO-ECONOMIC INFRASTRUCTURE OF SIF

WATER AND SANITATION



COMMUNITY MECHANIZED BOREHOLE AT WAWASE

THE SOCIAL INVESTMENT FUND (SIF)

IMPACTFUL SOCIO-ECONOMIC INFRASTRUCTURE OF SIF

WATER AND SANITATION



8 SEATER LATRINE @ UPPER DENKYIRA WEST DISTRICT

THE SOCIAL INVESTMENT FUND (SIF)

IMPACTFUL SOCIO-ECONOMIC INFRASTRUCTURE OF SIF

WATER AND SANITATION



8-SEATER KVIP ATTACHED TO THE 6-UNIT CLASSROOM BLOCK AT TSITO

THE SOCIAL INVESTMENT FUND (SIF)

IMPACTFUL SOCIO-ECONOMIC INFRASTRUCTURE OF SIF



BENEFICIARY SME IN WA

THE SOCIAL INVESTMENT FUND (SIF)

IMPACTFUL SOCIO-ECONOMIC INFRASTRUCTURE OF SIF



BENEFICIARY SME IN WA



Thank You!

Let's Get In Touch

Message Us

info@sifinghana.org

Call Us

Tel: +233 (0)302 778 920

Tel: +233 (0)243 690 350

Address

Off El-Wak Stadium Road, near
the Agricultural Engineering
Directorate

Visit Our Website

www.sifinghana.org